

Convex Reinsurance

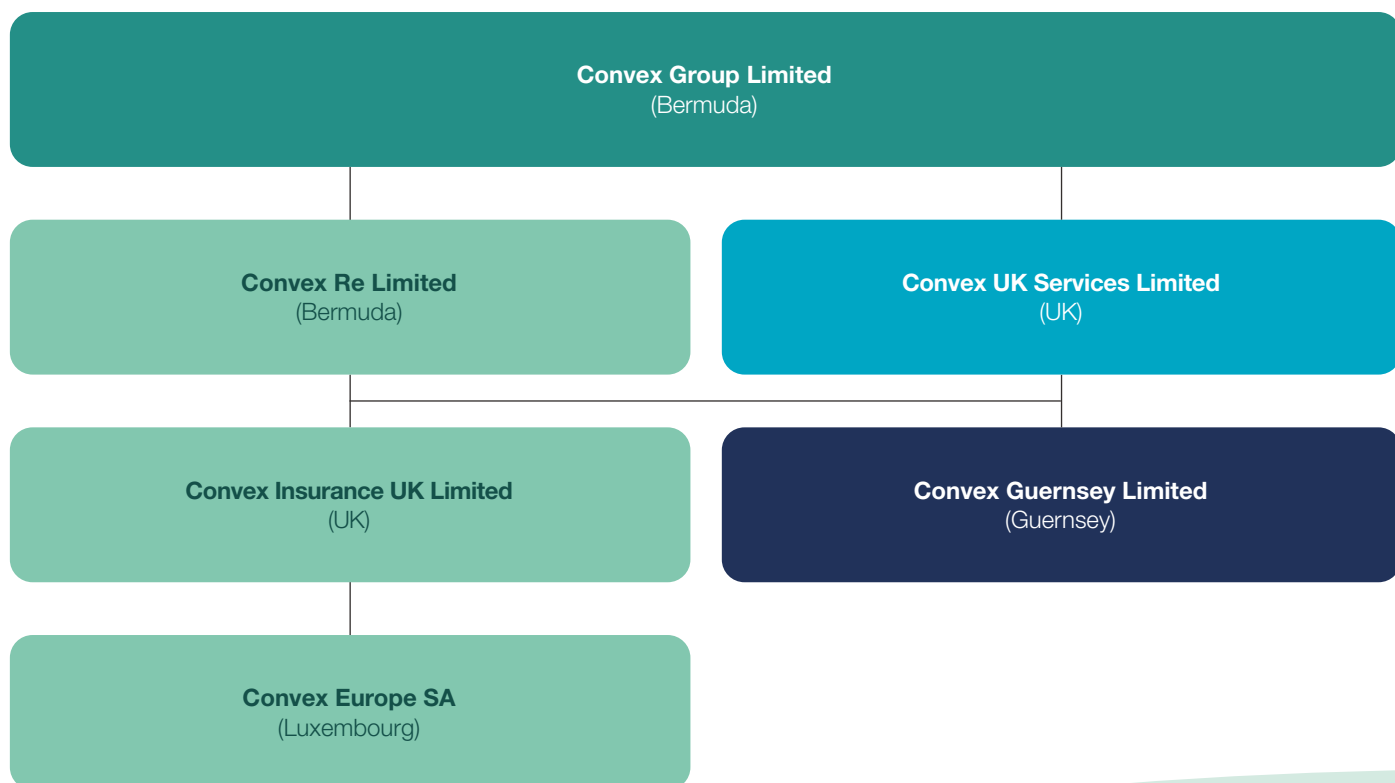
Convex overview

How

- Headquartered in Bermuda with risk carrying entities in Bermuda, (BMA-regulated) and the UK (PRA/FCA-regulated) and Europe supervised by the CAA.
- Convex Re Limited, Convex Insurance UK Limited and Convex Europe S.A. have an A.M Best A [Excellent] rating and an S&P A [Outlook stable] rating.
- We are creating a balanced and diversified portfolio of insurance and reinsurance risks with an emphasis on complex, specialty lines. We focus on large commercial clients with complex risk requirements.
- Underwriting commenced with effect from 1 May 2019 on a worldwide basis.
- Convex Group has secured \$3.2bn of which \$2.8bn constitutes Tier 1 capital in Bermuda, with the remaining \$400m structured equity facility that will, when called, also constitute Tier 1 capital in Bermuda.
- Our funding is provided by consortium of long-term investors led by funds managed by Onex Partners, a private equity platform of Onex Corporation (TSE quoted; Mkt Cap: CAD\$7.39bn at 10/03/2022).

View our latest financial condition report [here](#)

Convex Corporate Structure



Committed capital of \$3.2bn, raised on a long-term basis.



Business written includes Property, Accident and Health, Marine, Casualty, Equine, Political Risk, Energy, Security Risks, Aerospace, Reinsurance Property, Casualty and Specialty.



Available capital exceeds regulatory requirements by a margin as at 31 December 2024 and is expected to continue to do so for the foreseeable future.



Projected mix of 60% Insurance and 40% Reinsurance when the business is mature.



Convex currently has around 450 employees.

Convex Reinsurance

Overview

We are a comprehensive reinsurer with a balanced portfolio, able to provide a diverse range of products to our clients and we pride ourselves on hiring the best people to help us build strong broker and client relationships across the industry. We've built the tools to ensure that we can trust our data to provide valuable insights, allowing us to make better decisions for our clients.

Why choose Convex Reinsurance?



Relationships

Since we commenced underwriting in 2019, we've been successfully developing the breadth and depth of our core relationships. Our ever growing market presence has helped us evidence the increased value of our multi-line offering to our clients. By focussing on strengthening our existing relationships we've been able to secure the trust of our client partners - ensuring that we are their choice reinsurer across a range of products.



Operational excellence

We pride ourselves on achieving operational excellence to deliver high quality outcomes with a market-leading low expense ratio. We've been focussed on building the foundations to ensure we have exceptional data capabilities at Convex. Our forward thinking approach has allowed us to build trust in our data and implement the tools we need to support the underwriting process at Convex.



Better decisions

When it comes to making underwriting decisions, our data-driven method for rating and pricing risk allows us to view risks within a broader context – ensuring that we can provide quality insights and make better decisions that bring lasting benefits to our clients.

To complement this approach, we've created a values driven culture where our people are thriving in a working environment that fosters collaboration through placing an emphasis on technology, agile working and cross functional project teams.

Our People

We know our success depends on our reputation. That's why we've welcomed leaders in their fields from across the industry to help put us firmly on the path to becoming our clients favourite reinsurer.



Stephen Catlin
Co-founder and Executive Chairman



Paul Brand
Co-founder and CEO

Reinsurance Executive Committee



Matt Paskin
Chair, Reinsurance Exec Committee



Paul Simons
Chief Executive Officer, CRL



Christophe Chandler
Chief Underwriting Officer, Reinsurance



Roy Foster
Chief Underwriting Officer, London



Richard Slater
Chief Underwriting Officer, Bermuda

Reinsurance Product Heads



Debbie McLachlan
Product Head, International Casualty



Richard Pagram
Product Head, US Casualty



Robert Smart
Product Head, Specialty



Miles Brewer
Product Head, International Property



Sam Ashard
Product Head, US Property

Our products

We have a diversified product offering, with our teams writing business out of two distinct platforms in London and Bermuda. We work as a unified Convex Reinsurance team across our two platforms, ensuring consistency for our brokers and clients, and supporting each other in our product teams.

International Property

Comprehensive offering of CAT, risk and pro-rata reinsurance products to a broad range of clients, from small mutuals to large multinationals. Specific focus is on CAT exposures in Europe, Japan, Canada, Australasia and the Caribbean.

London

Mark Yeulett
Senior Underwriter
E: mark.yeulett@convexin.com

Emily Wright
Senior Underwriter
E: emily.wright@convexin.com

Bermuda

Miles Brewer
Product Head,
International Property
E: miles.brewer@convexin.com

Amon Wedderburn
Underwriter
E: amon.wedderburn@convexin.com

Kimberly Hall
Underwriter
E: kimberley.hall@convexin.com

Dakota Lamb
Trainee Underwriter
E: dakota.lamb@convexin.com

View the International Property product page [here](#)

US Property

North American portfolio consisting of CAT, Risk and proportional treaties covering the gambit of natural and man-made perils, including Wind, Quake and Wildfire.

London

Sam Ashard
Product Head
E: sam.ashard@convexin.com

Emily Wright
Senior Underwriter
E: emily.wright@convexin.com

Leah Thomas
Underwriter
E: leah.thomas@convexin.com

Will Lockhart-Smith
Underwriter
E: will.lockhart-smith@convexin.com

Allie Riker
Assistant Underwriter
E: allie.riker@convexin.com

Max Hodgkinson
Assistant Underwriter
E: max.hodgkinson@convexin.com

Bermuda

Lucy Forcey
Senior Underwriter
E: lucy.forcey@convexin.com

Richard Quinn
Underwriter
E: richard.quinn@convexin.com

Alex Kiy
Underwriter
E: alex.kiy@convexin.com

View the US Property product page [here](#)

International Casualty

Worldwide client base, from Europe to emerging markets, on a proportional and non-proportional basis. A broad suite of products including public and products liability, professional lines, motor, workers' compensation and employers' liability.

London

Debbie McLachlan
Product Head

E: debbie.mclachlan@convexin.com

Eleanor Start
Trainee Underwriter

E: eleanor.start@convexin.com

View the International Casualty product page [here](#)

US Casualty

Reinsurance solutions for US-domiciled clients, writing classes such as Professional Liability, Medical Malpractice, General Liability, Workers Compensation and Auto.

Convex will consider both non-proportional and proportional reinsurance with a focus on long-term, mutually beneficial partnerships across a range of carriers, from small, regional niche providers to the larger blue-chip Insurance companies.

London

Richard Pagram
Product Head

E: richard.pagram@convexin.com

Kit Ward
Senior Underwriter

E: kit.ward@convexin.com

Ellie Turrell
Underwriter
E: ellie.turrell@convexin.com

Adam Mullan
Trainee Underwriter
E: adam.mullan@convexin.com

Bermuda

Eoin McMahon
Underwriter
E: eoin.mcmahon@convexin.com

View the US Casualty product page [here](#)

Specialty

A range of specialty reinsurance risks on both excess of loss and proportional basis, including: Accident & Health, Agriculture, Aviation & Space, Construction, Contingency, Cyber, Marine & Energy, Political risk, Surety and Credit and Terrorism & Crisis.

London

Robert Smart
Product Head
E: rob.smart@convexin.com

Richard Williams
Senior Underwriter
E: richard.williams@convexin.com

Martin Hochstrasser
Senior Underwriter (Luxembourg)
E: martin.hochstrasser@convexin.com

Simon Jones
Underwriter
E: simon.jones@convexin.com

Mia Fung
Underwriter
E: mia.fung@convexin.com

Alex Drew
Trainee Underwriter
E: alex.drew@convexin.com

Déarbhla Neill
Trainee Underwriter
E: dearbhla.neill@convexin.com

Bermuda

Harry Thompson
Senior Underwriter
E: harry.thompson@convexin.com

Mathias Lemblé
Senior Underwriter
E: mathias.lemble@convexin.com

Makai Joell
Trainee Underwriter
E: makai.joell@convexin.com

Abigail Brewer
Trainee Underwriter
E: abigail.brewer@convexin.com

View the Specialty product page [here](#)

Convex is an international specialty insurer and reinsurer founded by Stephen Catlin and Paul Brand. With operations in London and Bermuda, Convex occupies a unique position in the insurance industry combining unrivalled experience, reputation, and a legacy-free balance sheet.

Convex has a bold and clear ambition: to be our clients' favourite insurer and reinsurer. To achieve this, we are redefining what it means to be an insurance company. Our operating model, built on efficiency and innovative use of data to drive better decisions for our clients, helps us to win clients and the business we need, and to create the insurance company of the future.



Convex Re Limited

Point House, 6th Floor, 6 Front Street,
Hamilton HM 11, Bermuda

Convex Insurance UK Limited

52 Lime Street, London EC3M 7AF

Convex Europe S.A.

37 Boulevard Joseph II, 2ème étage,
L-1840 Luxembourg, Grand-Duchy of Luxembourg

Convex Europe S.A. UK Branch

52 Lime Street, London, EC3M 7AF

Convex Guernsey Limited

Bucktrout House, Glatigny Esplanade, St Peter Port,
Guernsey, GY1 1WR

Convex North America Insurance Services LLC

1 Palmer Square E, Suite 441, Princeton NJ 08542

convexin.com

Please note that this document only provides a summary of the typical key features of the type of policy wording which is described. It is not meant to be exhaustive, and it is subject to change without notice. Nor should this information be construed as legal, tax or financial advice regarding insurance coverage.

This document is not intended as a contractual offer to sell insurance, and it is not intended to create an agency relationship in any manner. This information is for preliminary information purposes only, and cannot be relied on as being a contractual document to any extent binding on Convex. It does not in any way replace or supplement the terms and conditions of any insurance policy which may be issued. When any policy is agreed and issued, the full terms and conditions of cover, including any exclusions, will be found in the policy schedule and wording together with any endorsements which are applicable.

This document contains general information about the Convex Group and although Convex Group endeavours to ensure that the content is accurate and up to date, users should make appropriate enquiries before taking any action based on its contents. Convex Group accepts no responsibility for any information contained within this presentation and disclaims and excludes any liability in respect of its contents or for action taken based on this information.

Convex Group is the trading name of Convex Group Limited, a company incorporated in Bermuda, and the ultimate parent company of the Convex Group of companies, as follows: Convex Re Limited, a company incorporated in Bermuda, which is a wholly-owned subsidiary of Convex Group Limited and licensed and supervised by the Bermuda Monetary Authority; Convex Insurance UK Limited, a company incorporated in England & Wales, which is a wholly-owned subsidiary of Convex Re Limited and authorised by the Financial Conduct Authority (FCA) and the Prudential Regulation Authority (PRA); Convex Europe S.A., a company incorporated in Luxembourg, which is a wholly-owned subsidiary of Convex Insurance Limited authorised and supervised by the Commissariat aux Assurances (CAA). Convex Europe S.A. UK Branch is a branch of Convex Europe S.A. and authorised by the FCA. Convex Guernsey Limited, a company incorporated in Guernsey, which is a wholly owned subsidiary of Convex Re Limited and licensed and regulated by Guernsey Financial Services Commission; and Convex UK Services Limited, a company incorporated in England & Wales, which is a wholly owned subsidiary of Convex Group Limited.